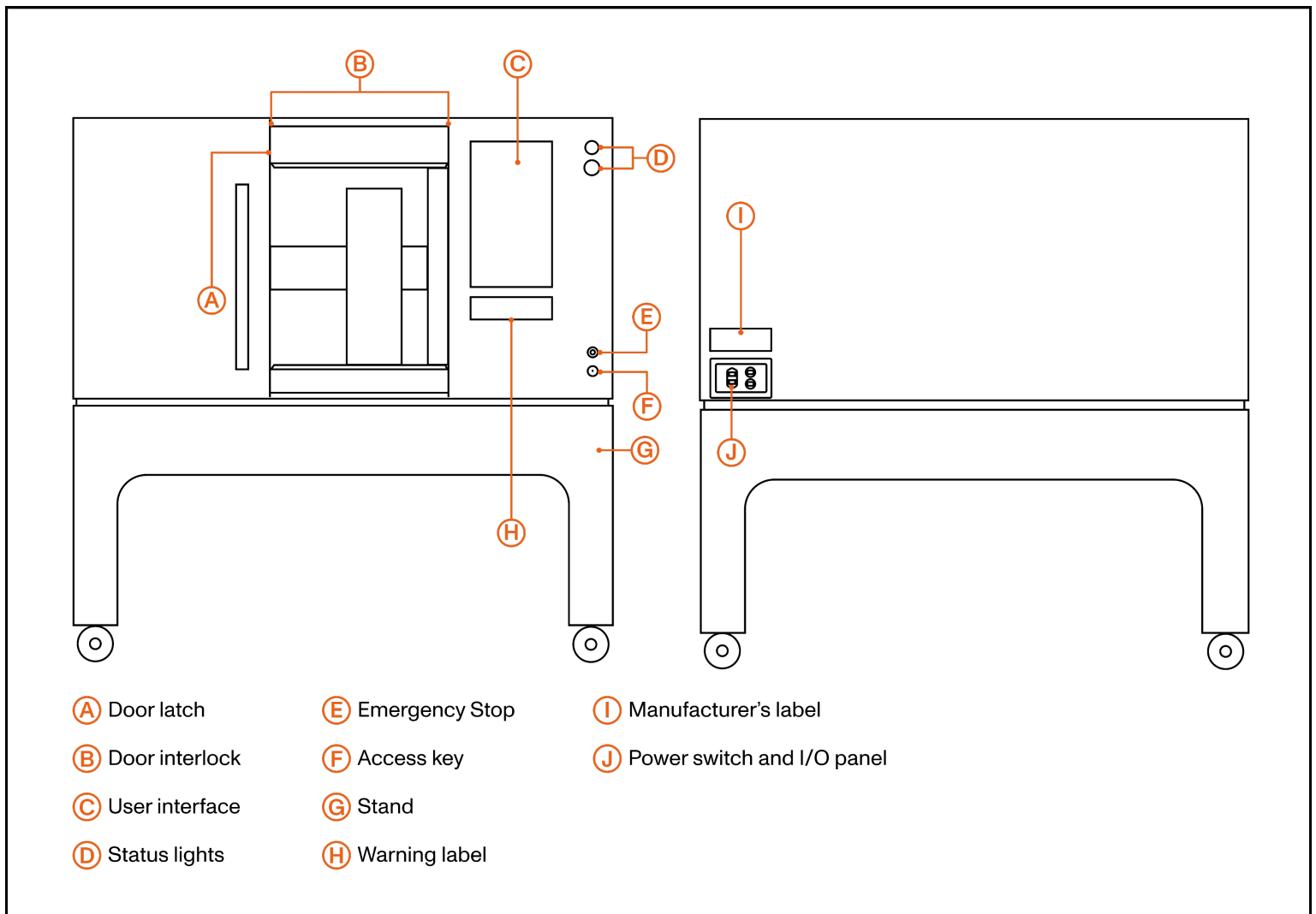


Interlock and Indicator Functional Tests



Interlock test setup

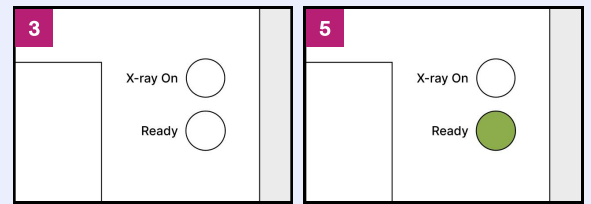
These are the common steps that precede interlock functional tests.

1. Verify that the machine is plugged in and the main power switch is on
2. Close the scanner door
3. Insert the X-ray key switch and switch to "On" position
4. Twist the Emergency Stop button clockwise to reset to the "Run" state
5. Unlock the scanner control software

For any of the interlock test steps, if the system or X-ray status lights do not perform according to these instructions, the interlock test is a failure. You should Lockout and Tagout the machine according to your company procedures and contact Lumafield support (support@lumafield.com).

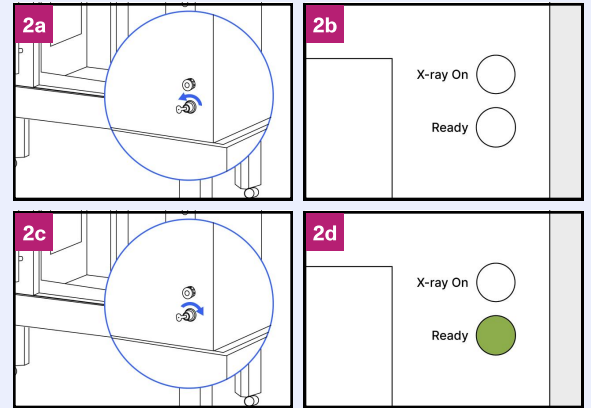
Door lock test

1. Complete the Interlock Test Setup
2. Unlatch and open the door
3. Verify that the green X-ray Ready status light turns off
4. Close the door
5. Verify that the green X-ray Ready status light turns on



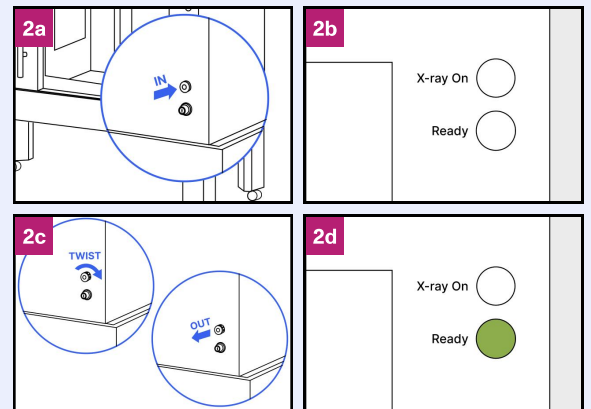
Key switch test

1. Complete the Interlock Test Setup
2. With the door closed:
 - a. Turn the key to the "off" position
 - b. Verify that the green X-ray Ready status light turns off
 - c. Turn the key to the "ON" position
 - d. Verify that the green X-ray Ready status light turns on



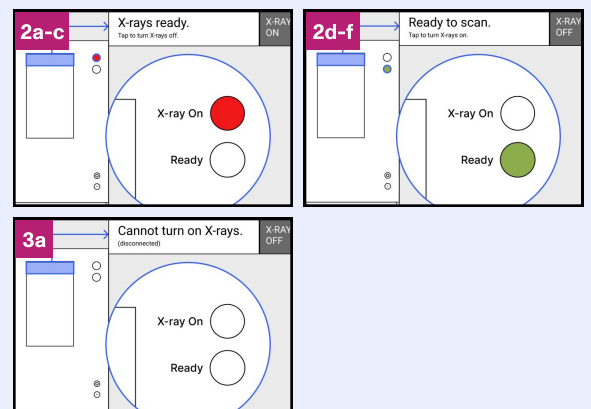
Emergency stop button test

1. Complete the Interlock Test Setup
2. With the door closed:
 - a. Press the emergency stop button all the way until it clicks
 - b. Verify that the green X-ray Ready status light turns off
 - c. Rotate the emergency stop button clockwise until it pops out
 - d. Verify that the green X-ray Ready status light turns on



X-ray control and status light test

1. Complete the Interlock Test Setup
2. With the door closed:
 - a. Turn X-rays on in the scanner control software
 - b. Verify that the green X-ray Ready status light turns off
 - c. Verify that the Red X-ray On status light turns on
 - d. Turn X-rays off in the scanner control software
 - e. Verify that the Red X-ray On status light turns off
 - f. Verify that the green X-ray Ready status light turns on
3. Unlatch and open the scanner door
 - a. Verify that the scanner control software says "Cannot turn on X-rays (disconnected)".



For any of the interlock test steps, if the system or X-ray status lights do not perform according to these instructions, the interlock test is a failure. You should Lockout and Tagout the machine according to your company procedures and contact Lumafield support (support@lumafield.com).